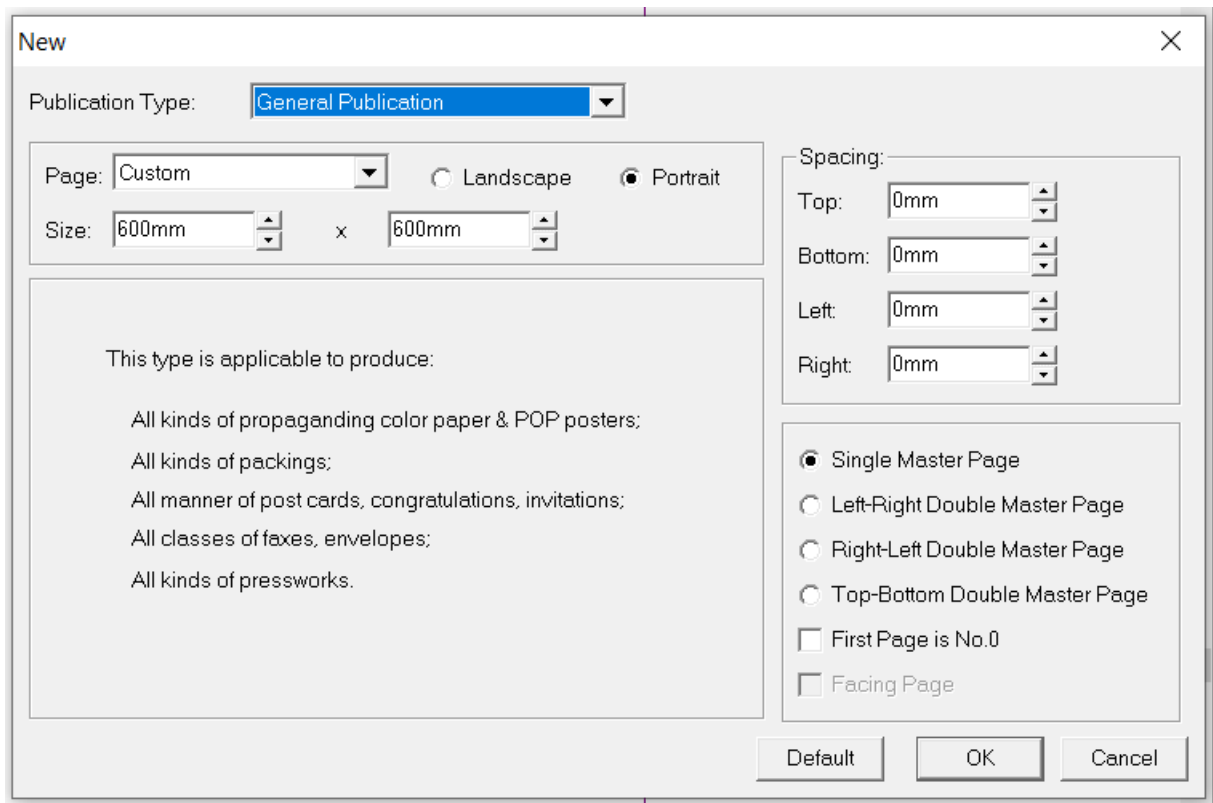
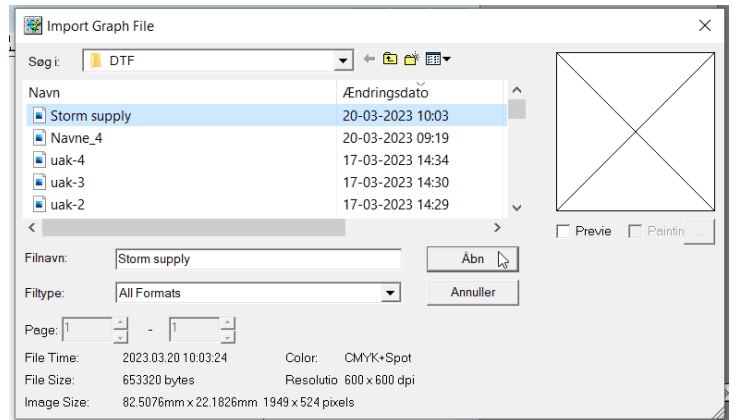
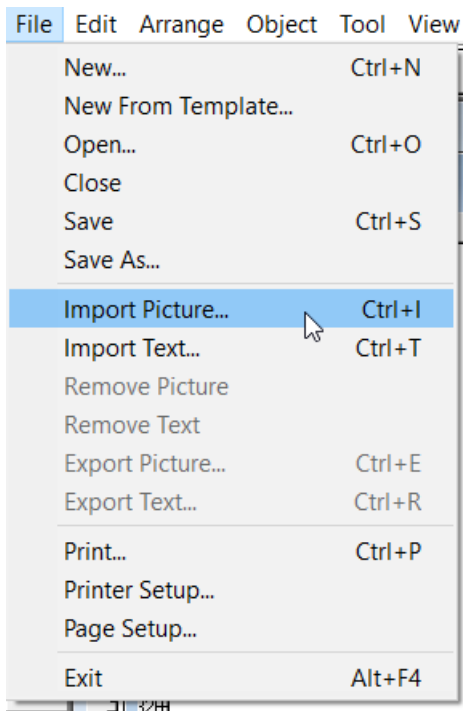


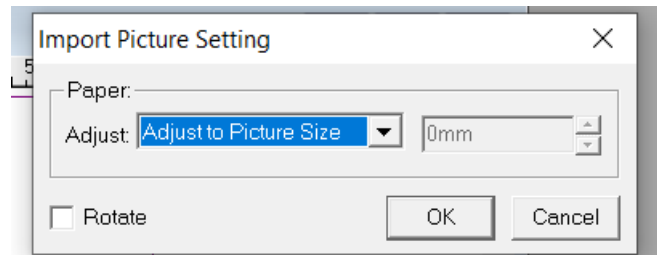
DTF FILER TIL RIP



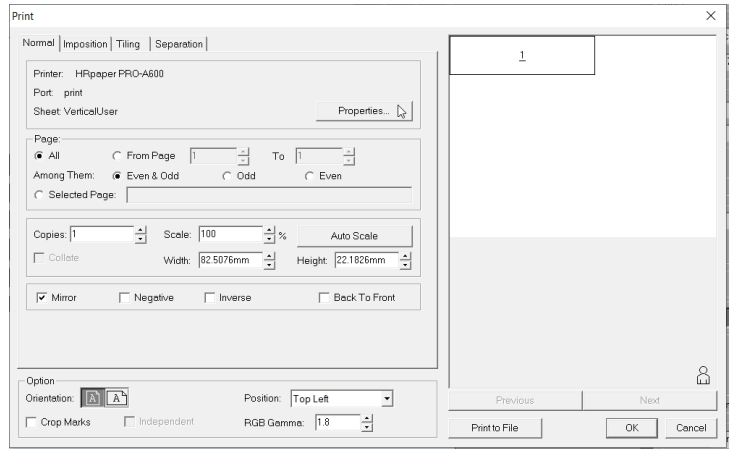
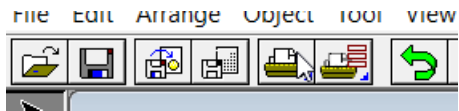
OPRET NYT DOKUMENT



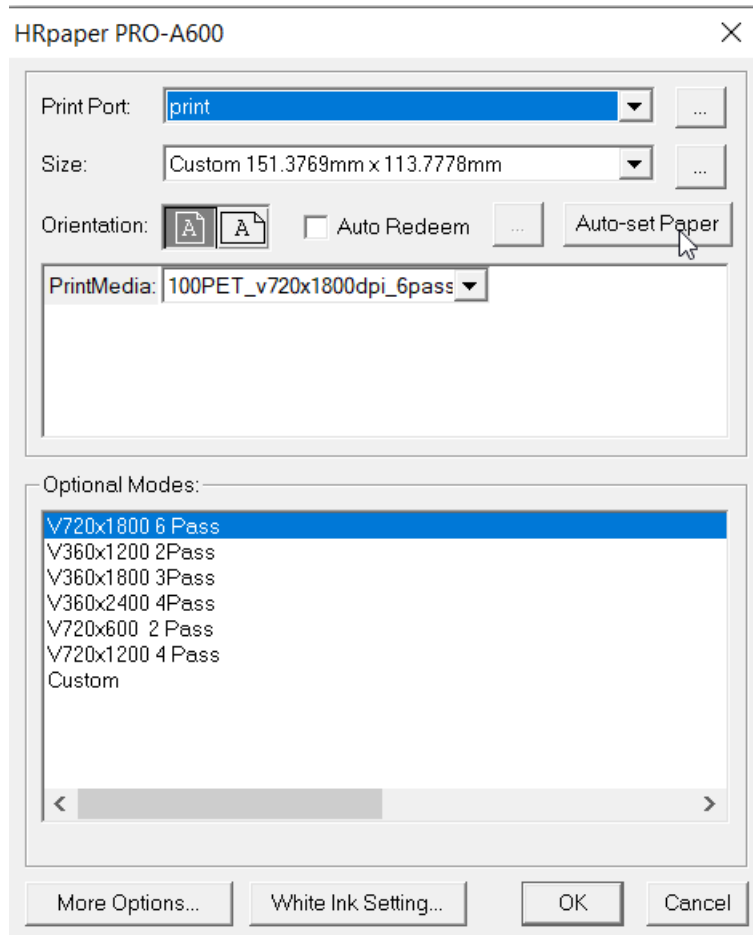
IMPOTÉR DIN BILLEDFIL



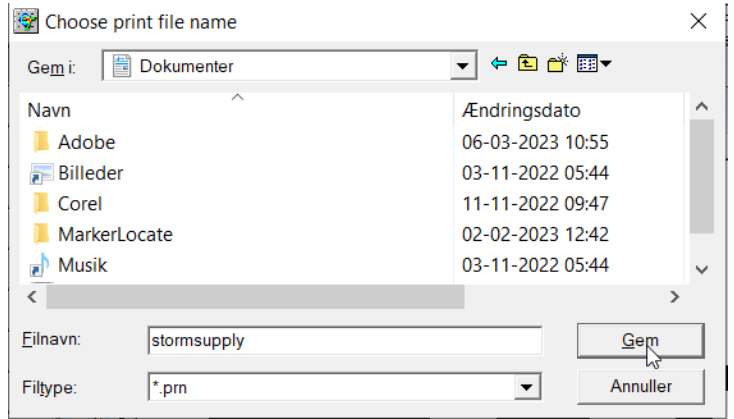
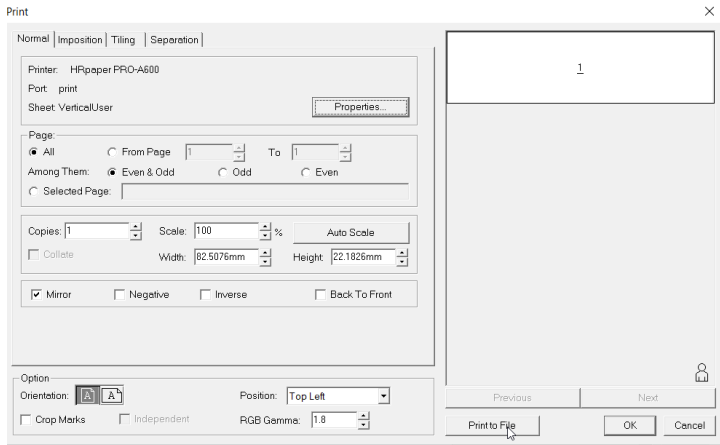
SÆT DEN TIL ADJUST TO PICTURE SIZE



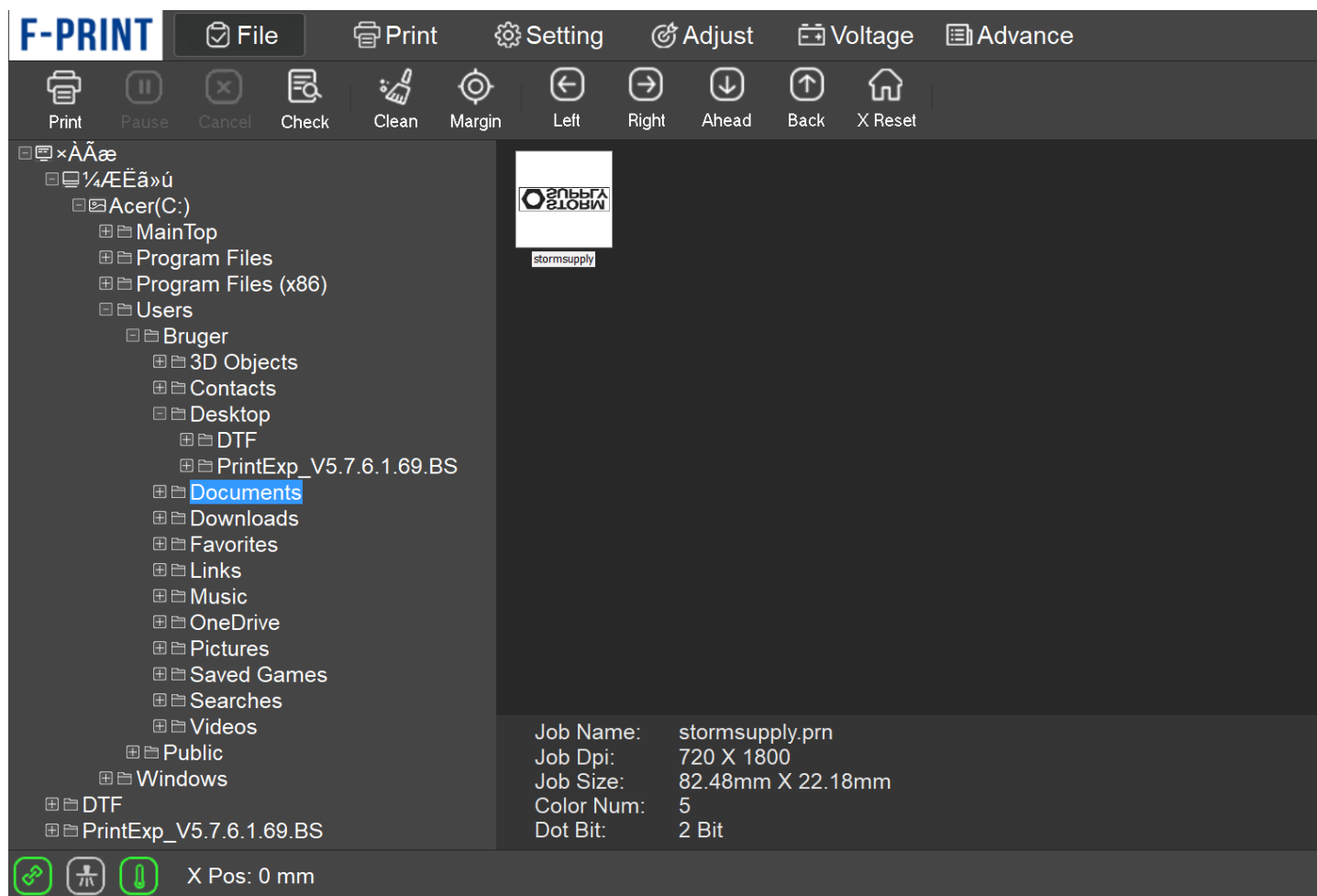
TRYK PRINT



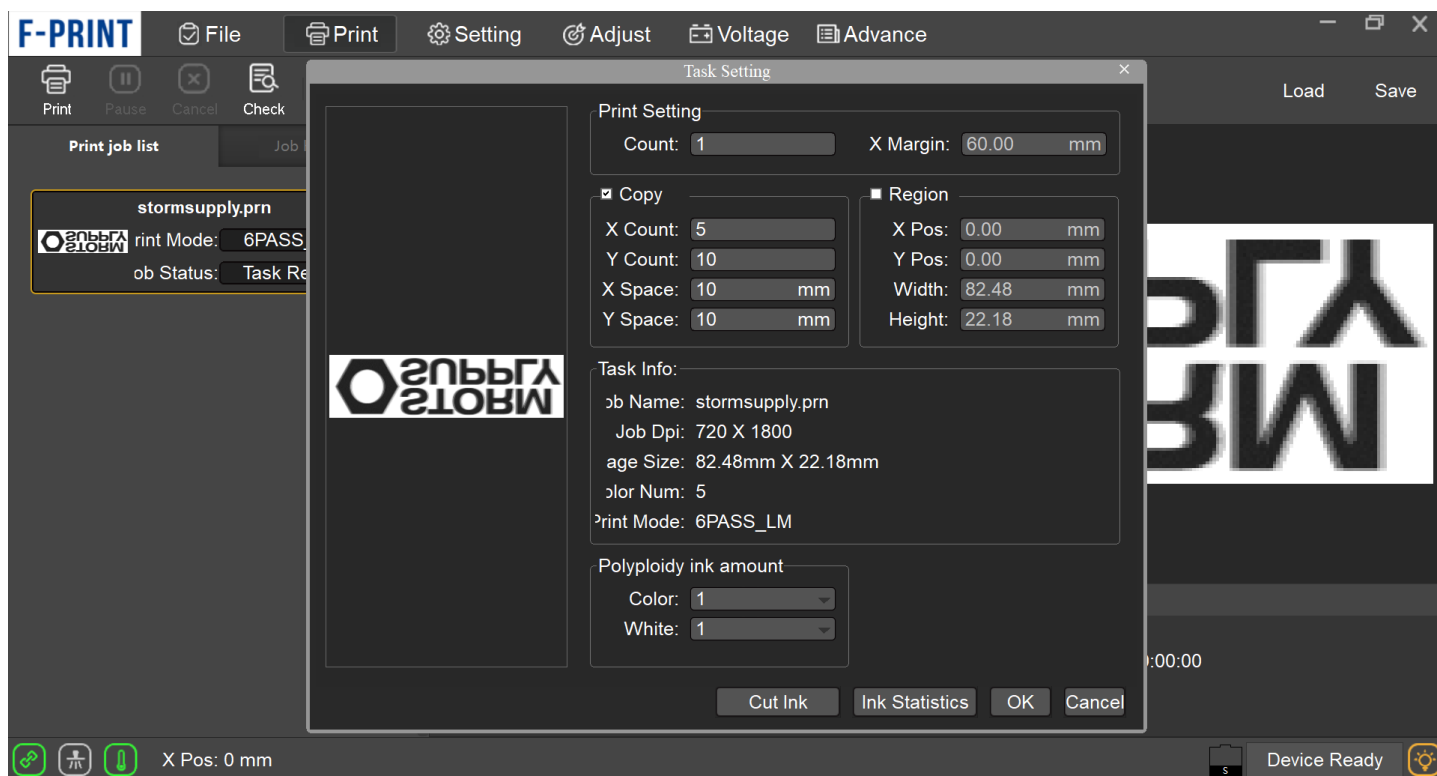
TRYK PÅ PROPERTIES OG AUTO-SET PAPER



PRINT TO FILE OG GEM DIN FIL



FIND DIN FIL I PRINTEXP



DOBBELTKLIK PÅ DIN FIL I DIN PRINTKØ FOR AT ÆNDRE ANTALLET AF TRANSFERS DER SKAL PRINTES

